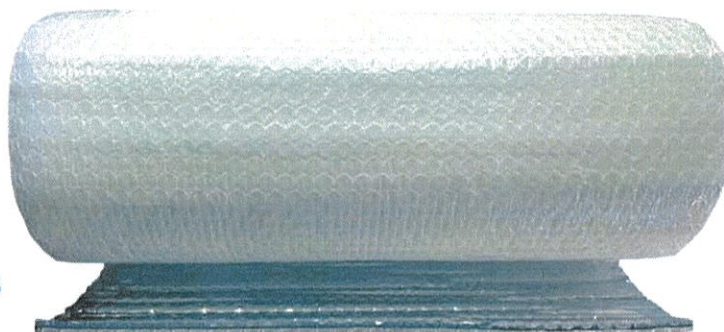




Triplex Crawlspace Insulation

Polyshield Triplex® Crawlspace Insulation R10 is designed specifically for masonry wall insulation applications. Our Crawlspace Insulation is over 1" thick, featuring large double-bubble foil/foil material and a foam center. This pliable yet stiffer material provides a much easier install, saving up to 70% of labor. The unique Triplex® Crawlspace Insulation R10 has 95% reflectivity, matching all the other variations of our bubble insulation. The XPE foam center provides a higher R-Value, delivering a higher level of fire protection.

Some states require a specific R-Value when insulating crawlspace masonry walls, while many states and municipalities don't require a specific R-Value. Triplex Crawlspace Insulation R10 provides a minimum R10 value when including a 1" air space on the inside surface of masonry walls. Triplex Crawlspace Insulation is a superior vapor and moisture barrier, as well!



Products

Roll Size (sq. ft.)	Product	Type	Width	Length	SKU	Weight (lbs)
100	TRIPLEX® Crawlspace "S" R-10 Double Foil/Foam/White	TRIPLEX	48"	25'	TRILX-2XBF-FF-MPET	37
100	TRIPLEX® Crawlspace "D" R-10 Double Foil/Foam/Foil	TRIPLEX	48"	25'	TRILX-2XBF-MPET	37

Advanced Termite & Pest Control, LLC
1671 Hwy 70 E Crossville, TN 38555
931.456.6689 / Fax 931.484.8131



Triplex Crawlspace Data Sheet

PRODUCT	Triplex Crawl Space S	Triplex Crawl Space D
	PolyWhite/Bubbles/Metalized Foil/ EPE Foam/Bubbles/Metalized Foil Two layers of 2/5" durable extra-large air bubble film with a core of 1/5" EPE foam laminated with two layers of reflective metalized film and layer of white barrier polyethylene	Metalized Foil/Bubbles/Metalized Foil/EPE Foam/Bubbles/Metalized Foil Two layers of 2/5" durable extra-large air bubble film with a core of 1/5" EPE foam laminated with three layers of reflective metalized film.
Contact Temperature Range	-60°F to 180°F (-51°C to 82°C)	-60°F to 180°F (-51°C to 82°C)
Thickness	1" nominal	1" nominal
Emittance (Metalized Side)	E=5%	E=5%
Water Vapor Transmission	.02 perms ASTM E96	.02 perms ASTM E96
Puncture Resistance	60lbs/in	60lbs/in
Tensile Stress (kPa)	TD:3123 /MD:3073	TD:3973 /MD:3419
Tear Strength (kN/m)	TD:78.09 /MD:76.83	TD:99.33 /MD:85.49
Pliability	No Cracking	No Cracking
Linear Shrinkage	None	None
Mold and Mildew	No Growth	No Growth
Flame Spread	20 ASTM E84-08	0 ASTM E84-08
Smoke Development	120 ASTM E84-08	20 ASTM E84-08
Fire Rating	Class A /Class 1	Class A /Class 1
POLYSHIELD® R-VALUES	Triplex Crawl Space S	Triplex Crawl Space D
Crawl Space Under Flooring***	R-37	R-39
Wall – Basement Masonry**	R-10.0	R-10.0

*Depends on the interior of the metal building and sizes of the air spaces provided.

**At least 1" of dead air space

***6" or more of dead air space

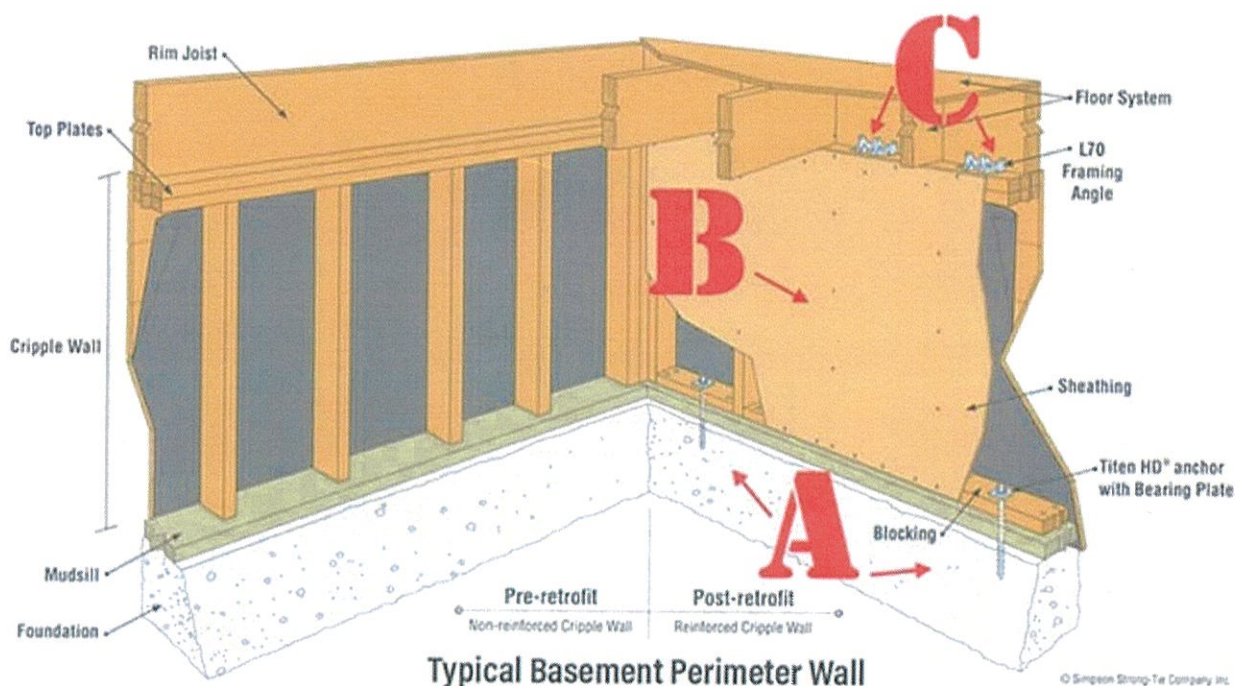
Cavity R-values per the requirements of FTC 16 CFR Part 460 for intended applications for 50°F, with a temperature differential of 30°F The R-value for Heat Flow Horizontal is for a block wall assembly, as is common for a basement or garage, installed with 1x4 furring strips on one side. Please contact us if you need the R-value for your specific assembly or system.

The R-Value of an enclosed reflective airspace is factored in accordance with the ASHRAE Handbook of Fundamentals, Chapter 26, Table 3 or the ASHRAE 90.1- 2016 Section A9-4 (or addendum ac to the 2013 edition) or ASTM C1224.

Advanced Termite & Pest Control, LLC
1671 Hwy 70 E Crossville, TN 38555
931.456.6689 / Fax 931.484.8131



Triplex Crawlspace Ponywall Application



Examples:

No second partition just back siding.

Pine Board R value calculations

R value target: R 10.00 BTU

Triplex 1"

Temperatures: TC 0C-18C ATC=12C	R Value m ² xK/W	U Value W/(m ² xK)	Emissivity	R Value hr×ft ² ×F/Btu
Outside air film	0.030			0.170
Pine board	0.086			0.488
Unventilated 1"-1.1/4" reflective air space	0.810		0.050	4.601
Polyshield Crawl Space Triplex (1")	0.600			3.408
indoor air film (reflective surface e=0.05)	0.400		0.050	2.272
Total R (Rt)	1.926	0.519		10.940

With closing board as in the above Photo (B type):

Pine Board R value calculations

R value target: R 10.00 BTU

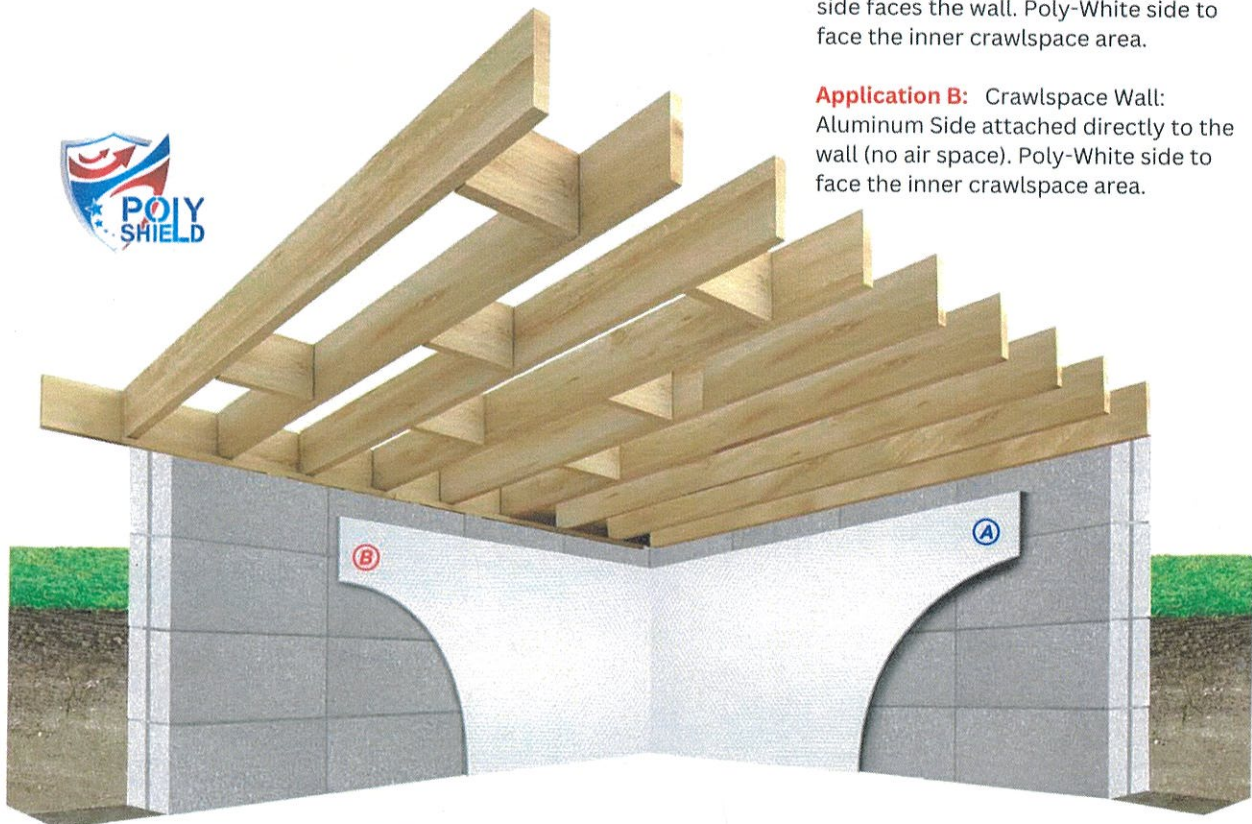
Triplex 1"

Temperatures: TC 0C-18C ATC=12C	R Value m ² xK/W	U Value W/(m ² xK)	Emissivity	R Value hr×ft ² ×F/Btu
Outside air film	0.030			0.170
Pine board	0.086			0.488
Unventilated 1"-1.1/4" reflective air space	0.810		0.050	4.601
Polyshield Crawl Space Triplex (1")	0.600			3.408
Unventilated 1"-1.1/4" reflective air space	0.810			4.601
indoor air film (non-reflective surface)	0.120		0.050	0.682
Total R (Rt)	2.456	0.407		13.950

Advanced Termite & Pest Control, LLC
1671 Hwy 70 E Crossville, TN 38555
931.456.6689 / Fax 931.484.8131

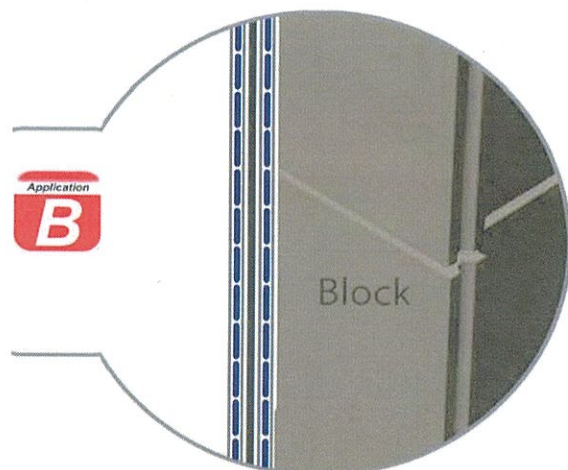
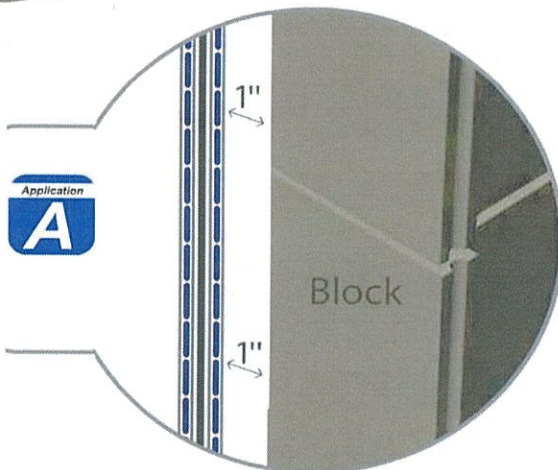


Triplex Crawlspace Applications



Application A: Crawlspace Wall:
Air space of 1"-1.25" required. Aluminum
side faces the wall. Poly-White side to
face the inner crawlspace area.

Application B: Crawlspace Wall:
Aluminum Side attached directly to the
wall (no air space). Poly-White side to
face the inner crawlspace area.



Advanced Termite & Pest Control, LLC
1671 Hwy 70 E Crossville, TN 38555
931.456.6689 / Fax 931.484.8131